

RETURN TO UWNL HOME PAGE

Upper Wensleydale Newsletter
Issue 121 – December 2006 –
January 2007
CONTENTS

Editorial	2
This month's competition	4
Answers to last month's competition	5
"Wild Wensleydale"	5
Wensleydale Camera Club 50th Anniversary	6
Wensleydale Railway	8
Gun Club News	10
To the Gambia	11
The playing of the Merry Organ	13
Bainbridge School News	14
Askrigg School News	16-17
DCM to host new club	19
New Online shop for YDMT	19
Hawes School News	22
Countersett Dreaming	23
Not many people know this	25
Gardening News	26
Letters	29
Before I lose my marbles	30-31
Police Report	32
Hold on to your Heritage	33

Published by

The Upper Wensleydale Newsletter
Old Station House,
Hawes, DL8 3NL

Tel: 01969 667785 Fax: 01969 663559
e-mail: alan.watkinson@virgin.net

Extracts of the Newsletter on the Web:
www.wensleydale.org/newsletter

Printed by Peter C. Wood, Peter H. Jackson and
ASW and collated, folded, stapled by
newsletter volunteers at the Wensleydale Centre,
Yorebridge, Askrigg

Committee: Alan S. Watkinson,
Rima Berry, Belinda Bond (Bursary student),
Sue Duffield, Sue Harpley,
Katherine Head (Kids' page),
Peter H. Jackson, Alastair Macintosh,
Pam Robinson, Janet W. Thomson,
Lorna Ward.

Editorial

It might come as a surprise to readers to learn that often a couple of weeks of “mulling over” precede the eventual draft of these editorials. The writer was walking around the lanes in the drizzle, clearing his head, waiting for inspiration, when on his way back to Hawes a car drew alongside and a cheery voice called “D’ye want a lift in?” “No, I’m having a walk!”. “That’s it, then” the driver said... “Thanks”

“That’s it, then” gave the idea; inspiration had come; and coupled with a gentle hint, from someone close to the writer, to be positive and cheerful at this time of the year, things started falling into place. “That’s it then”, that’s what it’s about; value added. The kind offer had been made and with no hard feelings we parted. There aren’t all that many places left where this kind of thing still goes on. Nor are there many places where, in the street, the kids still pass the time of day with the oldies, and locals very often will still have a smile and a word for visitors whom they’ve never seen before. There’s such fear and suspicion in some places.

It still needs to be stressed from time to time: that things in our area are pretty good. Blessings need to be counted! OK, on some economic measures we are not high on the list, but there are many things that add to that ‘quality of life’ that people long for. Let us remind ourselves.

We sometimes bemoan the fact that there aren’t many of us, so we don’t attract resources, but that means we’re not anonymous either. It isn’t as easy to get away with things if we’re known!; the (few) local ne’er-do-wells don’t usually succeed, and any visiting criminal is often spotted (no, we aren’t nosey, just doing our community work!). As a proportion of the population, crime is very low and

volunteering thrives but we mustn’t be complacent.

In so many places you’ll go out shopping and see no-one you know to speak to; in our area you can be out all morning putting the world to rights and getting the gossip, but seriously, that’s how news of neighbours’ troubles gets shared, and visits and offers of help follow. It’s an area of extra care and attention. We might seem to be rushing about but the pace of life here is less stressful; real traffic chaos is unknown. There is almost nowhere left where you will get seen so readily by the doctor, or such a quick response when you need a job doing (Not so for you? Well how soon have you paid them in the past?) Our postmen and binmen offer a personalised service often beyond the call of duty; and for so small an area, just count the number of pubs and restaurants to choose from!

And where can you find such a mixture of characters! Over the years we’ve featured over two hundred of them! They all add ‘quality’. Plenty more to do!

And the air is pure and clean, the views and the scenery are a national treasure, wildlife thrives and you can still find places where it is dark enough to really appreciate the night sky.

All the more reason then, out of our good fortune, to be generous, and already charitable events in churches and schools and clubs have been raising money to be given away. Surely the mark of a truly sound community is that it gives and shares; not only its money but its consideration, its friendliness and its welcome, being bold enough and open enough for that to extend to people of all kinds and from wherever they come.

We wish you a Merry Christmas and a Happy New Year.





Eunice

There were just three finders who had never won the prize before so as it's Christmas Eunice asked if they could each be winners, and we said yes. She was on the front cover. Winners: **Adele Sunter, Reeth; Lee Metcalfe, Burtersett and Mary Sunter, Gayle.** Where is she now?

Never too late to be a Friend

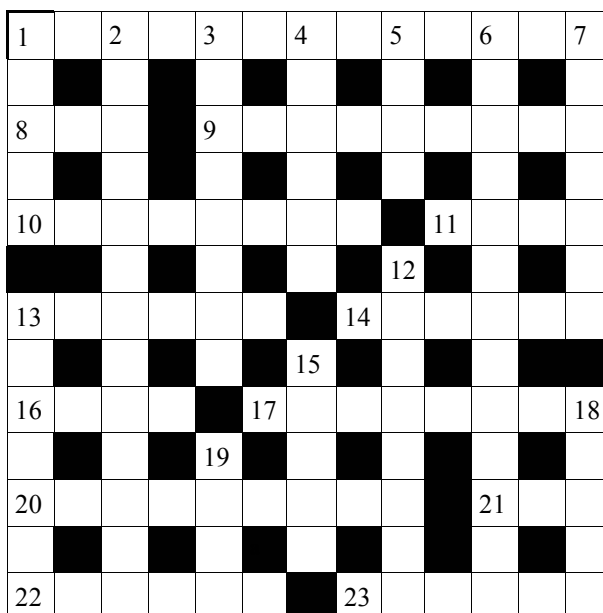
-of the Hawes Christmas Lights. The lights are mostly up and Father Christmas will arrive after the Children's Party in Hawes on Saturday December 2nd. Much of the funding has come from those generous folk who have again become "Friends of the Hawes Christmas Lights".

A draw to identify a lucky Friend takes place on December 2nd but if you're not yet a Friend, it's not too late! Your support is still needed and a second draw will take place on Friday December 22nd for 10% of funds collected between December 3rd and 22nd.

So don't delay, go to Whites of Wensleydale, sign up today and keep the lights shining.

A.M.

This month's competition: a crossword



Clues across

1. It looks better when decorated
8. It's made for one's own back
9. Drawn
10. One of these ladies might be in the road
11. Sounds heavy- and you might be 9 to it
13. Where the evil panto character might be; _____ you!
14. Squelchy, or in the mass.
16. "Can we see the little child, _ _ within?" (from a 1 down)
17. Cold in Yorkshire
20. Nasty king's men
21. Once no room here
22. My good new lass provides alternate mountain songs
23. He was away in it.

Clues down

1. You'll hear it sung in Gordale Scar, Old Gang Mine or Hardraw
2. R T R (N R)
3. Of the cross or for the trains
4. Moving poet
5. The Magi saw it first
6. Confused on a tail in getting up, but I'm squaring it; my conscience, that is!
7. S
12. Evergreen shrub
15. Wander round Harrogate
18. If you're this, you're not here
19. Sounds lazy, but much admired

The Huck family of Church Farm Hubberholme would like to thank all of the lads from Hawes Fire Crew for all their help in rescuing the calf. We couldn't have managed without you and we are very grateful. Many thanks

November competition answers

All began with NO...

1. Nottingham
2. Nostell Priory
3. Nothing
4. Nova
5. Notch
6. Nobby
7. Noah
8. Nosterfield
9. Nose
10. Notable (Not able!)
11. Nous
12. Now
13. Nought
14. Notice (Not ice!)
15. Norse
16. Nobel

National Park Phone Award

A £68,000 telephone system purpose built for the Yorkshire Dales National Park Authority has won the national 'Siemens SME Solution Award 2006'. The system offers an improved service to the public through joining all the YDNP premises into one 'virtual office' using a single number while still allowing specific numbers to be allocated to particular offices.

Wild Wensleydale

This BBC2 programme which was made in the area during the summer months will be shown on December 10th at 5.15pm. The programme producer, Mark Flowers, rang the Newsletter to give us a bit of background information. Mark was born in Northallerton and grew up in Crakehall and was inspired by the dales so it has been a "fantastic treat" to make the programme for the Natural History Unit.

"It's a sort of 'story behind the legend'", he says. Everyone knows of Wallace and Gromit and the Wensleydale cheese, but

with information supplied by David Hartley and Alice Amsden at the Creamery the programme shows local characters, wild life and landscape. "You'll love the aerial photography of the area", says Mark who thinks the Ure with its dale is the best!

There is spectacular footage of the activities of very rare fish, rare wild flowers and waterfalls. So much material was assembled for the programme that two 10-minute extras have also been made; one entitled 'Wild Yorkshire River' and the other featuring Andrea Hunter of Hardraw with her superb felt pictures.

A.S.W.

50th Anniversary exhibition

At the time when digital camera sales in the UK have reached 2 million units a year Wensleydale Camera Club has been awarded a £4,000 Arts Council Grant to help obtain and preserve a historic archive of Dales photography from the second half of the 20th century. In an increasingly digital age many black and white negatives and colour slides are being consigned to the bin and lost for ever.

This Photographic Exhibition of Dales life will be in Leyburn Methodist Hall on 20th and 21st April next year. The preparation work involves scanning original photographs, and archival printing and mounting so that a permanent record, supported by an Exhibition catalogue, is available for future generations.

Wensleydale Camera Club is keen to locate unpublished work for consideration. Contact Pat Ryder 622333, Digby Angus 623139 or Leonard Shepherd on 622043 if you know of possibly interesting photographs. The Exhibition will include a selection of local work by the retired but still active press photographer Frank Knowles, and by the late Frank Bewick.

Bringing the Exhibition into the 21st century should be the photographic winners from Muker, Reeth and Wensleydale Shows, together with a new body of work



by the sixth form arts students of The Wensleydale School. They have chosen the challenging photographic theme of “The issues affecting young people living in a rural community”.

We would like more photos from the upper dale. The originals will be scanned and returned normally within 2 weeks.

Here are two "upper dales" photos (Courtesy Frank Knowles/Ackrills). Do you recognise any of the ladies. They are from the Robinson Crusoe cast in Hawes in January 1954.

Leonard Shepherd, Chairman



Victorian Singers

The HARP Singers bring the charm of a Victorian Christmas to Wensleydale when they tour pubs, restaurants and old people's homes in the run-up to Christmas.

The choir, in Victorian dress, will tour the upper dale singing carols on Sunday afternoon, December 10th. (See our middle pages). The Singers' big event in the Dale is "Carols by Candlelight", a varied programme of Christmas music and readings under conductor Roger Ohr, as well as carols for the audience to join in. That is on Wednesday, December 20th (7.30pm) at the Bolton Arms, Leyburn.

"The last three years, the concert has been packed," said HARP chairman Ray Marriott. "This year, it's in aid of Downs syndrome charities, one in Ripon and one in Moscow". Three members of the choir visited the British-Russian charity in August and were shown the new day centre built partly as a result of the choir's fundraising efforts. The centre now has more than 700 Down syndrome children on its books. For further details: **01677 422879**.

Salon expands

Ginger Tree, the recently opened hair and beauty salon in Hawes, are expanding. They have opened the "front room" on their premises in the Market Place as a dedicated Wedding Room, so that brides, bridesmaids and mothers-of-bride-and-groom can all be given special pampering on their big day.

Carol and Kathy have also recruited new staff - stylist Sharron Hatch from Aysgarth, apprentice beautician Lottie Pickard, also from Aysgarth, and Saturday assistant Hannah Thornborrow from West Stonesdale, who is considering a career in hair and beauty. They will all be in place for the Christmas rush!

Wensleydale Railway

Do you fancy a good walk in the week after Christmas? Wensleydale Railway's scheduled services will run every day from Boxing Day to New Year's Day. On January 1st, a Guided Walk leaves Leyburn station at 11.50, allowing people to use the train and join the walk from both ends of the line – all welcome on a turn up and go basis (please wear shoes and clothing suitable for wintry weather and bring refreshments, especially drinks).

There will be mince pies and mulled wine on some WR trains over the holiday period – with hot soup as well on New Year's Day. Santa Specials run on December week-ends and from December 19th until Christmas Eve, with wrapped gifts for children and mulled wine and mince pies for adults (booking essential for these events).

Santa Specials will also run on School Parties Day on Wednesday December 13th – playgroups also welcome.

Wensleydale Railway trains run every Saturday and Sunday in January, February and March. If you book and pay in advance for a group of 11 or more (including children aged 5 or over) we will offer you a group discount on the fare! Under 5s and dogs go free). More information on the website www.wensleydalerrailway.com (or phone 08454 50 54 74

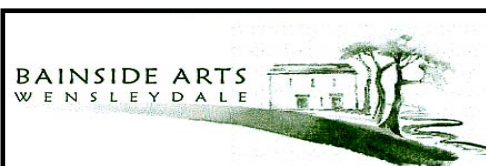
Chess club

West Burton School is hoping to start a chess club and wondered if there is anyone in the Dale who could help.

We have been in touch with the English Chess Federation, have ordered some equipment and will have a visit from a professional in the New Year, but is there a chess king or queen (or even a bishop!) who can help a few pawns move off square

one?

Bill Oakey, Governor.



Bainside Book Group **December 6th** 2.00pm

Four seasons 'Winter' art workshop **December 30th**; Janet Willoner **650070** for details.

There will be a new brochure in January. There will be also be an after-school Drama Group for 7 to 10 year olds and a six-week 'French for beginners' course for adults.

For further details and charges, please ring Jenny Jackson on 650070

Spooky anagrams

Some readers might have seen these which are doing the rounds:

Dormitory	=Dirty room
Presbyterian	=Best in prayer
Astronomer	=Moon starrer
Desperation	=A rope ends it
The eyes	=They see
The Morse code	=Here come dots
Slot machines	=Cash lost in me
Election results	=Lies, let's recount
A decimal point	=I'm a dot in place
Eleven plus two	=Twelve plus one
Mother in law	=Woman Hitler
George Bush	=He bugs Gore
The earthquakes	=That queer shake

Now go and work out some more for yourself; you might have the odd idle moment over Christmas!

Christmas at the Chemist's

J&E Hogg Chemist in Hawes will be open as usual, from 9.00am - 5.30pm on Saturday 23rd December. We will be closed Sunday, Monday and Tuesday.

We will re-open again on Wednesday 27th December through to Saturday 30th December 9.00am - 5.30pm each day, with normal deliveries. We will be closed Sunday (New Year's Eve) and Monday 1st January, re-opening at 9.00am on Tuesday 2nd January 2007.

Make sure you have a few simple over-the-counter remedies in the medicine cabinet in readiness for those minor ailments that can take the enjoyment out of the festive season. Painkillers (liquid form for the kids), cough/cold remedies, something for an upset stomach, and a few first aid essentials. Pop in and ask Angus,

for advice or ring on 667213

Angus - the pharmacist

1st Hawes Brownies

Since half term the Brownies have all gained their Home Skills badge. Several Brownies represented Girlguiding at the Remembrance Parade and Service. We are ending the term with a Christmas party with food from "The Chippie"

The Brownies would like to thank everyone for their continued support and for the generous donations given throughout the year. Our best wishes for a very happy Christmas to you all.

Linda Reynolds



MYSTERY PICTURE.

Last month's was of Widdale Fell End looking from near Thwaites Bridge and was very quickly spotted by Harold Thwaite ("I was born at Mid Mossdale), and Ernest Metcalfe ("I live at Collier Holme!). So they should know!

Gun Club News

The Wensleydale Gun Club held its A.G.M. at the Victoria Arms, Worton, on November 9th. Trophies were awarded for the season and the winners were:

- | | |
|--------------|----------------------|
| J. Metcalfe | Sporting |
| E. Potts | L.V.A. Rose bowl |
| M. Wearmouth | Coronation cup |
| T. Clarkson | R.B. Daykin cup |
| M. Irwin | Gilsan Sports cup |
| M. Wearmouth | Best gun, Littondale |
| M. Irwin | Keith Weatherald cup |

Trophies for the overall season were also awarded:

- | | |
|----------------|------------------------------|
| D. Sadler | Raymond Scott top gun trophy |
| R. Daykin | Veterans' shield |
| B. Houldsworth | Best female shot |
| N. Dinsdale | Tom Waite most improved |
| G. Clarkson | W.G. club young gun |

During the season £290 was donated to charity including £60 raised at the Terry Dinsdale memorial shoot. The club now boasts over 50 members— a record; however new members are always welcome

David Cockett, 667251

To the Gambia

The Dales Team of the **Friends of Govi (UK)** left for the Gambia on Thursday, November 23rd. They hope to deliver the two minibuses to the only school for the blind in the Gambia by December 13th.

They have raised over £13,000 since the summer and this has paid for the two minibuses, which were bought in Germany, and various other vehicle expenses. The team members are covering their own personal expenses as well as helping towards the fuel and ferry costs.

The equipment they are carrying for the school include computer driven braille embossers, Perkins braille machines for individual use, a printer from Arkengarthdale School, second-hand computers from Richmond Methodist school, educational materials and teaching aids, paper and exercise books, and lots of pencils, ballpoint pens and soft toys. In addition there are boxes of used spectacles.

The team is very grateful to all who have supported them. Any donations later will go towards the cost of maintaining the school buses during the next year as well as meeting other needs at the school.

Pip Land

Volunteers renovate Mission Room

Thornton Rust Mission Room, a former stone barn, stands adjacent to the road on the village green. It was donated to the Churchwardens of the Parish of St Andrew's, Aysgarth, by Metcalfe Kilburn Iveson of West Witton, who died in 1974.

The Mission Room occupies the upper floor of the barn. By 2005, it was a cold, draughty and damp building, with plaster peeling off the gloss-painted walls and rotten wood in the window frames and door. In June 2005 a group of volunteers agreed to start raising money for its renovation by holding a Flower Festival in the building, thus enabling work to begin a few weeks later. Seven volunteers spent one evening removing the bulk of the plaster from the walls in July but it took a core of five or six dedicated volunteers a further 826 hours to 'make good' again – we met regularly for two hours each Monday evening for over 12 months.

Despite further fund-raising, the receipt of several donations, and being awarded a grant by the Leyburn and Mid-Wensleydale Partnership, we could not afford to have a professional re-plaster the internal walls. So volunteers raked out the old mortar between the stone blocks, re-pointed the walls, scrubbed off old distemper from the stones and painted three walls with Casein distemper, to enable the walls to breathe. The fourth wall was left bare after re-pointing, to display the original structure of the building.

The tongue and groove ceiling was repaired and all the boards caulked to minimize draughts. Ceiling and exposed beams were re-painted, as was the altar screen after its refurbishment. New windows and a door were made off-site by professionals but all were installed and painted by volunteers, and a volunteer installed skirting boards in the room as a further draught-proofing

measure.

With the addition of new heaters, carpet and chairs, and a new kneeler for the altar rail, the Mission Room is now a warm and inviting room for quiet contemplation. It is also a record of what can be achieved by a small group spurred on by camaraderie and a common ambition – we motivated each other enough to work in an un-heated building in the depths of winter as well as on midge-infested sultry summer evenings.

The core volunteers were Paddy Charlton, Alan Cook, Hilary Davies, Mike and Janet Thomson, and Daisy Thwaites.

The Mission Room was rededicated on 19 November 2006 by Revd Canon Sue Whitehouse.

JWT

It's that porch again!

Readers will be please to know that Sylvia's porch (3, Bainside, Bainbridge) is open to receive unwanted computers as Al Metcalfe and a friend are setting up a cybernet caff in Catterick and could use a few. There's room for half a dozen.

“The playing of the merry organ”

Never had the organ in Hawes Methodist Church sounded quite like it. To celebrate its renovation (only just finished the day before the recital), Philip Scriven, the organist at Lichfield Cathedral, gave a superb and varied performance greatly appreciated by the audience (asked to sit in the gallery for the best effect) and giving prolonged applause.



From the opening brilliance of Bach’s famous Toccata and Fugue in D minor through modern pieces showing in turn soothing gentleness to comical exuberance, Philip also described the music and chatted to the audience. The final piece, Widor’s famous Toccata, came all too soon but that allowed time for much conversation over refreshments before Philip, who had rushed up from London, had to return to Lichfield.

An evening like that won’t be forgotten for a long time; let’s hope there’ll be more like it. **A.S.W.**

Hawes Youth Club

We have had a great start this term. We have been swimming, we cooked some pasta with Stella from scratch and it was actually edible! For Children in Need, Emily Pickard will be sitting in a paddling pool of baked beans. We are going to the Metro Centre on the 6th December to do some Christmas shopping. The bad news for us is that one of our youth workers Nicola Cloughton has left youth club and

Alex is leaving at Christmas. If anyone would like to enquire about taking Nicola’s or Alex’s place or even volunteering at youth club now and then (we’re not that bad), then call in on a Wednesday evening between 6.30 and 8.30pm or telephone the Area Manager, **Viv Osbourn on 01748 824720.** **Stacey Moore**

BAINBRIDGE SCHOOL NEWS

Events coming up

We are doing our Christmas play on Thursday 14th of December.

William Hague is coming to visit the junior class on Friday 1st December.

The whole school going to Sycamore Hall to sing on Friday 15th December.

Friday 15th December School Finishes for Christmas Break.

SATs Week 14th – 18th May 2007

Junior Class Residential Visit to Humphrey Head Outdoor Centre on 21st – 25th May

C.J.Mottershead

Tag rugby

On the 3rd of November we were playing Tag Rugby at Leyburn Community School. There were 6 teams. We had one team called the Bainbridge Broncos and one called the Bainbridge Bulls. The Bainbridge Broncos lost all of their games and Bulls lost too but they had lots of fun playing Tag Rugby at Leyburn.

.Ross Thwaites

Christmas box appeal

Bainbridge school has been busy collecting boxes for the Operation Christmas Child, everybody who wanted to take part filled a shoe box with little toys and other different things. We sent the boxes to children all over the world that never get any presents at Christmas, we collected 25 boxes of all shapes and sizes that we're sure they will love. It is a great feeling to know that we have made 25 children's Christmases better.

Stephanie Mudd

A Busy Term

After having a really successful harvest festival, we reached our goal and made £125.50 We had a really good time and I think everybody else did also. We are already learning our Christmas songs and have had a very busy start to the term. Our harvest decorations were already put up for

us because there was another harvest festival going on. They liked our decorations so much they used ours for their harvest festival service.

We have also started a lot of new clubs, we are having a card making club, our school librarian Netta will take charge of it. It is on Thursdays after school. We also have a computer club, Alex a school mum has been running it, and everybody really enjoys it. We still have our football club, which Paul Price has been taking, this has been running for a long time. The football club has had to stop now because of the dark evenings but they will start again after February half term.

Alex Parfitt

Languages in The Dales

As an A Level French student I may be biased on this subject but I believe it is essential for everyone to learn a foreign language. Not only is it an interesting and intellectually stimulating thing to do; it is also essential when it come to business, as foreign exports are big within The Dales and within Britain. A customer lost through poor foreign relations and language skills is money lost for a business.

Many people do not see the point of learning a language as they live in Britain and they (sometimes mistakenly) believe that everyone can and will speak English to them. This is not always the case, many of the older generations within the communist countries within Europe never learnt English; instead learning Russian as a foreign language. As well as this many countries speak either Spanish or French as their second language.

A foreign language is not only advantageous in the business world, it gives an edge on university applications and shows an understanding of another culture. It allows you to communicate with

a much wider variety of people and gives an insight into the traditions of another country.

In a community that is often sheltered like Wensleydale, learning a language can help to unlock so many possibilities within, business, education and socially as well.

I asked my French Teacher; Miss Sowter about the topic of foreign languages in the dales. She knows a lot more about the subject than I do (She speaks 5 Languages, 3 of them fluently) and had some interesting viewpoints. When asked why a resident of the dales should learn a foreign language she replied; "You never know what opportunities will arise within your life, therefore it is useful to be prepared for whatever comes along. There are many more jobs that involve languages than people expect, so a language is always useful."

Next she told me about the future of languages in Wensleydale; "It's very exciting that the government is now introducing French and other languages into the primary school classrooms as this is the place where children are most enthusiastic and willing to learn a language."

At this point whilst writing my article I am told that it may be a little biased, so I asked another A Level student about their views on languages in the dales.

~~—Alicia Jones who is taking Maths, Biology, English and Geography said that: "It is an important but hard skill to learn. Even though I haven't chosen to study a language I think it is a very worthwhile thing to do and can open up many opportunities in life. If your life is going to be lived solely in the dales then it's not so important to learn a language but with pressures of rising house prices and lack of accommodation for young people, many~~

people leave Wensleydale. I think these people would benefit from learning a language as it is a good skill to have in the wider world."

I recommend learning a foreign language to everybody as there is something in it for them at every level, from odd words to fluent speech; every bit is useful and can help with careers in many fields. Even if it's just something to pass the time in school or at home, learning a foreign language is a rewarding, exciting and sometimes challenging (but always worth the hard work) thing to do.

**Belinda Bond, Bursary student
Christmas message**

Each year we invite one of our local church ministers to write a piece.

A woman shouted out in the middle of a sermon and stopped the preacher in his tracks. He had been talking of the importance of having a quiet and peaceful December in order to prepare for Christ's coming. She argued that Christmas is about birth – and birth is painful, messy and chaotic.

In the midst of what has now become the traditional seasonal rush it is important for us to understand the reality of Christ's birth and its significance for us now. Jesus was born as a dependant, vulnerable human baby into a world that was as harsh as it can be today. There was cruelty and political unrest under both Herod and The Roman Empire. His family knew what it was to be homeless refugees. And, back in Nazareth, family life had its ups and downs just as we experience it today.

In the birth that we celebrate at Christmas there is the hope of God's love, and peace shining in the darkness and chaos about us. The Christmas story is not a sweet orderly fairy story as nativity plays might suggest. It is real and tough. It brings with it the promise of God being with us in times of

stress and anxiety and in the humdrum activities of our daily lives. From his presence we can derive strength and courage to move on through life.

But the preacher also has a point. We do need to take some time out quietly to ponder the meaning of Christmas and to join in worship through carols and Christmas readings, otherwise in the noise and chaos of our lives we may well fail to recognise God is there with us and so lose the opportunity to respond to His love.

A joyful and peaceful Christmas to you all!

Sue Whitehouse

ASKRIGG SCHOOL NEWS

Children in Need - 17th November

We had a wonderful non-uniform day for Children in Need and suggested that donations be sent in loose change to make a coin chain in the school hall. We were delighted with the end result, and although we had random swirling patterns rather than a chain we could measure, the total amount raised was £195! This is a lot of change! Thank you to everyone who contributed

Crystal maths day – WHAT A SUCCESS!

Saturday the 11th of November was the coldest, wettest, windiest day on record but we had an excellent time at Askrigg School. Class 3 (Years 5 and 6) had organised a superb Maths Crystal maze day for everyone to visit.

Mister Eldridge, our head teacher, had very cleverly put together 6 zones. Each zone had a collection of mathematical puzzles for your team to choose from. These are varied in difficulty. When you completed one of the questions out of a zone, you were given a crystal which
(c o n t i n u e d o v e r p a g e)
earned 10 seconds at the ball pool.

When you had visited all 6 zones and gathered the crystals needed, you headed

off to Mister Eldridge's office. This was the fun bit! You had to jump in a pirate's ship and hunt for dominoes. This was a bit tricky because you could only have dominoes which added up to even numbers and Mister Eldridge calculated how many you had scored by adding the dominoes together and giving you a final score.

The mathematical restaurant was full of mathematical food (for example, Triangular flapjack) which you could buy. People who tried the food thought it was FANTASTIC! We actually raised a lot of money because we made more than 100 pounds for the school council!

There were lots of cool and exciting games from the 'Knowledge magnet' at Ripon. In class 3 was the games room which you could choose any games you wanted to buy.

We had a brilliant time at the maths crystal maze day and we should hope that we have another maths crystal day in the future!

Ben Collins Y5

T h e C r y s t a l M a z e

It's big and bold and it's gone but it's definitely not forgotten. On the 11th of November 2006 a fabulous maths day arose. Each class had an ambassador: Class 1- Sophie Oliver; Class 2- Annabel; Class 3, - Tasha, and they all thought that these words were not even half as good as the event: successful, magical, brilliant and even fantabulous. If you were lucky enough to go then you'd agree that it was perfect for everyone and anyone.

The cafe was excellent with its tremendous tea, its cool coffee and its heavenly hot chocolate. As for cakes, there were miles of them and all delicious. Thank you to everyone who donated the food. We made over £100 and that's a lot of goodies for school to be kindly chosen by school council.

The maths maze was excellent and if you missed it, I'm sure some mathematical dust will reach you soon!

Lucy Langhorne Y6

Dales Countryside Museum hosts new Club

In June we launched the Yorkshire Dales branch of the Young Archaeologists Club. The Club Leader is Keith Webster, now a teacher, but previously an archaeologist with the Museum of London. In addition to Fiona and Debbie there are also two more adult helpers and fifteen members aged 8 - 16. All are local children although one member travels from Slaidburn in Lancashire.

We meet once a month and so far have had three meetings, the first of which was a test for anyone as the rain poured down on us as we stood on the edge of Semerwater! Not a grumble was uttered by the children though, all of whom were fascinated by what Tim Laurie had to tell them and to be able to handle prehistoric finds. They were equally enthusiastic when Vivienne Metcalfe gave us a talk on Roman and medieval pottery which included handling real and replica examples. Under the instruction of Liz Carlisle, we all got very messy making medieval pottery. We will be exploring the secrets of Bolton Castle at the December meeting on Saturday 2nd, with a "history hunt" which will conclude with a medieval packed lunch.

The programme for 2007 is currently being finalised and will include surveying historical buildings, excavating and flint knapping.

If you would like to know more, phone Fiona or Debbie on **666210** or if you would like to join the Young Archaeology Club, leaflets are in the museum reception. Membership of the club, which is affiliated to the Council for British Archaeology, costs just £12 for a year which includes a quarterly magazine and special member discounts at archaeological sites.

New Online Shop for YDMT

The Yorkshire Dales Millennium Trust (YDMT) has launched its new website, which includes an online shop and colourful new images depicting the many aspects of the Trust's charitable work.

David Baker, Fundraising Manager, explained that the YDMT needs continually to raise funds for the work it does, and one way to achieve this is by selling goods such as calendars and cards, etc. "The new site can take people's orders worldwide within seconds", he said. Yorkshire-based company '9xb' helped to develop the new website.

The Trust's website address remains the same: www.ydmt.org. The website is ready to use for online charity Christmas shopping or to 'Dedicate A Tree' for those special people in your life. Telephone orders can still be taken too, on: **015242 51004**.



Heavens Above

The Star of Bethlehem is such a familiar symbol of Christmas, we tend to take it for granted. But apart from a brief mention in St. Matthew's Gospel there's no other reference to it anywhere else in the Bible. So was it just a fanciful embellishment on the part of the author or is there any scientific evidence to prove that it was a real event?

Nowadays it's generally accepted that Jesus was born some years earlier than previously thought - sometime between 2 and 7 BC. Interestingly there were a number of astronomical events during this period which could account for the Star's mysterious appearance. One possibility is that it was a comet which would certainly fit the Bible's description of the 'moving star.' Two comets - one in 5BC and the other in the following year - could be candidates. The trouble is - comets aren't particularly rare, and in any case they were felt to be harbingers of doom rather than omens of good fortune. Another possibility is that the Magi witnessed a supernova - the remnants of a star that has blown itself apart in a cataclysmic explosion. Supernovas can be bright enough to be seen in daylight and often remain visible for months at a time. One such was seen by Chinese astronomers in March and April, 5 BC which lasted for 70 days. Unlike a comet, however, a supernova would not 'move' enough over this time-scale to account for the description of the star 'going before' the Magi, so regrettably we'll also have to rule out one of these as a solution to the mystery.

Perhaps the best candidate for the Star is a planetary conjunction— a line-of-sight effect which causes two (or even more) planets to appear to approach each other very closely in the sky. Conjunctions were immensely significant in the days when Astrology was taken seriously and great

store was set by them. In the decade or so before Jesus' birth there was a series of rare planetary conjunctions culminating in a particularly close one between Venus and Jupiter in 2BC. The two bright planets approached each other so closely, to the naked-eye they appeared to merge into a single object - an event of immense symbolic significance which might have prompted The Wise Men to set out on their famous journey.

So perhaps the Star of Bethlehem was a real historical event after all though we'll never really know for sure. By coincidence one of the planets involved in the conjunction of 2 BC puts on a spectacular show for us again this Christmas. It's the planet Venus which you'll find shining brilliantly low in the west shortly after sunset during the last part of December. It's visible throughout the festive season until well on into the New Year - a lovely sight in the deep blue winter twilight. Have clear skies!

Al Berio

Yorebridge Sports– up and running

The new gym and fitness suite have added a new dimension to sport for the area. Since October the fitness area has been busy with gentle exercise classes, aerobics, line dancing, and circuit training. New 10 week blocks start in early January and bookings need to be made to guarantee a place.

There may also be courses on tap, salsa, yoga and pilates, if there is a demand. The gym opened at the end of November, for those who really want hard exercise. There is a joining fee of £15 which includes a one hour induction session, then you can pay per session at £6.

Outdoor activities are busy throughout winter with five a side football teams, children's teams. People are travelling in from all over the upper dale and Richard (Shuffleton) has worked outside the centre even with 3 year olds at Dalesplay, in Hawes.

For any information and advice ring him on **650060, or 07968 606571**, or email at **info@vorebridge-sport.co.uk** **Kate Empsall**

Newsletters by post

Just a reminder: if you haven't yet renewed the subscription (£8 for the year, UK) or if you would like to start, please contact our treasurer before the next issue:

Peter H. Jackson, The Overlook, Gayle, Hawes, DL8 3RZ

HAWES SCHOOL NEWS

School Nativity Play

The children in Miss Caygill's class will be presenting 'A Wiggly Nativity' play at **2pm on Thursday 14th December**. The Nursery children will also be involved by dressing in part and performing a Christmas song. Mrs Alderson's class will be performing a dance piece based on 'We need a little Christmas' taken from the film 'Mame'. Members of the community are warmly invited to attend this Christmas celebration.

Pantomime

On Tuesday 12th December the whole school parents, friends and playgroup are going to see 'Cinderella' at the Civic Theatre in Darlington. We have the front seats of the theatre booked and everyone is very excited at the prospect of this Christmas treat.

Fun Day

The School Council requested a Halloween fancy dress day on Tuesday 31st October to raise money for the Air Ambulance fund. They raised a total of £45. The children really enjoyed the day! The school would like to thank Mark Williams, who generously gave every child a toffee apple which added to the party atmosphere.

Julie Woodyer

Countersett Dreaming

A misty day in Countersett. Rain falls gently as I walk to the top of the road and take in the panorama before me. Semerwater lies below surrounded by green, green fields, stone buildings and fences. It is a visual feast for eyes used to different landscapes.

I am Australian and I visit the Dales with my husband Martin on our post retirement trip. How to explain my feelings at being here? You see, I am a Robinson and my ancestors lived in this area from the mid 1500s.

My most notable relative was Richard Robinson, 1628 to 1693, who was the first Quaker in Wensleydale. I unearthed this amazing connection when researching my family history. My great, great grandfather was Henry Wood Robinson who emigrated to Victoria, Australia, in 1853 during the gold rush. The links with Countersett and Semerdale remained strong in the hearts of the Australian Robinsons. Family names appear again and again in subsequent generations. My Grandfather's name was John Semerdale and my father's John Richard.

This trip has been a pilgrimage of sorts for me. What a privilege to attend a gathering at the Countersett Friends' Meeting House, where my forbears attended for generations.

We stayed at Beebole Cottage in the grounds of Countersett Hall and enjoyed the hospitality of the new owners. Richard Robinson's initials are carved in the lintel above the front entry along with the date 1650. Robinsons lived and worshiped here for 212 continuous years and remained in the district for 250 years.

It is not often in life that we get the chance to learn about our beginnings. I feel very much at home in this landscape and

could live happily here if it were possible. Anyone interested in a holiday house swap?

Who knows? Perhaps we carry the imprint of our country of origin as part of our genetic make up. My grateful thanks to the people of Countersett, Bainbridge and Askrigg. Their warm welcome and hospitality to a couple of Aussie strangers show they are "Friends" in the true sense of the word.

**Dawn (Robinson) Smith
Australia**

Trafford trip

There is a shopping trip to the Trafford Centre in Manchester on **Sunday December 10th.**

The coach will leave Hawes Market Hall at 9.00am. Seats cost £10 and can be booked at Streetwise in Hawes **667192**

What's On at the Dales Countryside Museum

Mencap Christmas cards are for sale again in the museum shop. Also we stock a wide variety of merchandise for those last minute presents.

Tuesday 5th December

Spinning a Yarn. Spinning and rug making demonstration. Examples of weaving, felting, and dyeing explained. 2.00-4.00 pm

Saturday 9th December

A full day of festive fun for all the family including crafts and gift stalls, Mother Christmas with presents for every child, children's games, quizzes and activities, mulled wine and mince pies for the adults.

Tuesday 12th December

An evening concert 'Christmas Cheer' with The Aysgarth Singers and "New Voices" under the direction of Stan and Barbara Roocroft. "A Festive Celebration in Song" will begin at 7.30 pm

Tickets £3 and £1 (under 16's)

Refreshments will be available.

Saturday 16th December

Lempen Puppets will be presenting an afternoon performance of "The Shape Changer". A captivating puppet show for all the family. The hall doors will be open from 1.00pm, the show starts at 2.00pm.

Tickets £5 or £3 (under 16)

Refreshments will be available.

Thursday 28th December

There will be an afternoon matinee showing of "Ice Age 2 The Meltdown"

The hall doors will be open from 1.00pm, the film will start at 2.00pm.

Tickets £3.50 and £2.50

Refreshments will be available.

Over the Christmas and New Year period there will be "drop in" crafts, activities and games for children to enjoy every day.

The Museum is open every day 10.00am –

5.00pm but **closed** on the following days:

December 24th, 25th, 26th and January 1st

Tickets for all performances available from the museum

Contact us on **666210** or email:

hawes@ybtic.co.uk

Operation Christmas Child

A big 'Thank you' to the many individuals and church and school groups who have been busy decorating and filling shoe boxes. This year the 195 boxes from Upper Wensleydale will be taken with thousands of others to desperately poor children in Armenia.

Armenia is a small, mountainous nation of 3 million people sandwiched between Turkey and Azerbaijan. A terrible earthquake in 1988 and war with Azerbaijan in 1993 have resulted in 70 % of the population living in poverty.

We have also sent over £432 to Operation Christmas Child and they will be able to claim at least £48.72 from Gift Aid. Thank you for your generosity! We are grateful to Stephen and Linda at Hawes Post Office and the Resource Centre staff for receiving the boxes.

Heather and Nelson Caplin

Now not many people know this

Did you know you can buy a gallon teapot, get a spare part for your "Henry Hoover" or get your photo taken for a Driving Licence or Passport? All in Hawes!

How fortunate we are to have so many convenient businesses on our doorstep. This was highlighted in a recent article on Hawes in the *Dalesman*, but do we know all the services and goods that they offer?

Linda and I have now been here at the Post Office for 18 months and as "Incomers" we have been made to feel really welcome. We do realise that to become locals will take us well beyond our lifetime!

During this time there have been many changes - one being we no longer shop at a distant supermarket. We have learnt that Hawes is fairly self sufficient and to maintain this we now shop locally wherever possible.

With the current uncertainty about the future of the Post Office network, Card Account and the end of TV licensing at the P.O. I thought it would be appropriate to mention a few things we do that helps US to stay in business. As a well known advert says "every little helps".

Foreign currency: - we now hold U.S. Dollars, Euros and Travellers' cheques in stock..

Passports: - we have the Passport "check and send" service here at last! This provides a document check and a priority service which normally takes about two weeks.

Road Tax: - yes you can still get it at the P.O. it takes very little time and comes with a smile!

B.T. bills: - save yourself the stamp just drop in and pay by cash, cheque or card. (Many other bills can be paid, just read the

back for details)

All of the above help towards our income and the presence of a Post Office in Hawes.

Stephen and Linda



Don't let your garden catch a cold

Imagine trying to plant a garden on the top of Addleborough; how would you go about planning it and what would be the first actions to take? An extreme example maybe, but this month, with wild winter approaching, I want to recommend the toughest as well as the most decorative hedging plants for a more exposed garden.

With a new site, especially when it's open to the elements, it's best to get the hedge in as soon as possible. Even though creative planting can be more fun, put it to one side and concentrate on Project Windbreak!

What to plant? I find conifers too hungry and susceptible to wind rock. All that resistance to gales can result in the loosening of roots and eventual death of the plant. Far better to choose a hedge that will filter the wind, whilst remaining firm. Opt for a mixture of Hazel, Bird Cherry and Flowering Currant, as these are all sturdy, deciduous specimens and won't require staking. (To see Bird Cherry at it's best, take a wander up Mill Gill, Askrigg, around May - the ones up there are just a mass of white blooms). Simply plant 3 feet apart in well - composted soil, then bravely grit your teeth and cut down by half. This may seem counter productive but will ensure firmness, plenty of new buds the following spring and, eventually, a thicker, healthier barrier. When mature, a light, selective autumn pruning will ensure either copious spring flowers or, in the Hazel's case, catkins.

If an evergreen, winter flowering hedge is preferred, I would mix *Viburnum tinus* 'Eve Price' with *Eleagnus ebbingei*. The latter flowers October/November, whilst the *Viburnum* starts in October and carries on through to late spring. Staking the

young shrubs for a couple of years as well as applying a thick mulch in early spring will give them the best possible start.

Birds love the protection of this type of hedge, particularly on a wild, winter night. A safe, cosy roosting place for them is guaranteed if pruning is kept to a minimum. For this reason, I would leave it unclipped through the coldest months. Just sit back and enjoy the flowers and leave any minimal secateur work until later on in summer – fair weather gardening is much more fun!

Ed Gardener

Time of the signs!

When the last issue was being assembled (that's when the real news and views get an airing!) there was much concern about the number and proliferation of road signs in the area; "Seven 30mph signs in Thornton Rust" said one. "Seventeen between Leyburn and West Burton" someone later remarked. What's going on? So we inquired.

A *Department of Transport* directive states that in areas where there is little street lighting within a 30mph zone, there have to be *repeater signs*. These are to be at about 300metre intervals. (This has applied within 40mph areas for a long time). The Richmondshire area of County Highways is now getting on with this work but admitted that a couple of signs in Thornton Rust were badly sited and would be relocated. We also drew their attention to the sign in Gayle totally obscured by a barn, as featured in one of our previous newsletters.

"Slippery road" signs, as I think we realise, are there to cover the authority against any claims, but we were told that when the areas in question have been suitably resurfaced, these signs are temporary and will come down. Let's see!

There seems to be general concern that this is another example of rural areas losing their distinctive character with yet more creeping urbanisation. How many more signs are going to appear? Informing us of what? The more there are, do people take less notice?
A.S.W.

Doctors' rotas as supplied by the surgery .

December 2006

AYS GARTH SURGERY ROTA Wb - week beginning										
Wb	27nov		4dec		11dec		18dec		25dec	
Day	a.m.	p.m.	a.m.	p.m.	a.m.	p.m.	a.m.	p.m.	a.m.	p.m.
Mon	WJ	W	JA	J	FA	A	WF	F	shut	shut
Tues	FA	A	WF	WF	WJ	WJ	AJ	AJ	shut	shut
Wed	WJ	W	JA	A	A	A	WF	W	WJ	W
Thur	FA	A	WF	F	W	WJ	JA	J	F	F
Fri	W	W	J	J	J	J	F	F	W	W
Sat	Emergency service only									

Doctors: A - Arblaster, F - France, J - Jones, W - West, C - Closed
Morning Surgery: 9.00 - 10.30 a.m. (no appointments)
Afternoon Surgery: 4.00 - 5.30 p.m. (appointment only)
For appointments and all enquiries ring 663222

HAWES SURGERY ROTA Wb - week beginning										
Wb	27nov		4dec		11dec		18dec		25dec	
Day	a.m.	p.m.	a.m.	p.m.	a.m.	p.m.	a.m.	p.m.	a.m.	p.m.
Mon	FA	FA	W	W	WJ	WJ	JA	JA	shut	shut
Tues	WJ	WJ	JA	JA	FA	A	WF	WF	shut	shut
Wed	F	F	W	W	F	F	A	A	F	F
Thur	J	J	A	A	A	A	W	W	J	J
Fri	FA	FA	WF	WF	W	W	JA	JA	F	F
Sat	Emergency service only									

Doctors: A - Arblaster, F - France, J - Jones, W - West, C - Closed
Morning S'y: 8.45-10.15 Tues till 10.45 (no appointments)
Afternoon S'y: 5.00-6.00 Tues 1.00-4.00 (appointments only)
For appointments and all enquiries ring 667200

January 2007

AYS GARTH SURGERY ROTA Wb - week beginning										
Wb	1jan		8jan		15jan		22jan		29jan	
Day	a.m.	p.m.	a.m.	p.m.	a.m.	p.m.	a.m.	p.m.	a.m.	p.m.
Mon	shut	shut	FA	A	W	A	W	W	A	W
Tues	W	W	WJ	WJ	JA	JA	FA	FA	WF	WF
Wed	JA	J	FA	A	W	W	W	W	A	A
Thur	WF	F	WJ	W	A	A	A	A	WF	F
Fri	J	J	A	A	F	F	W	W	J	J
Sat	Emergency service only									

Doctors: A - Arblaster, F - France, J - Jones, W - West, C - Closed
Morning Surgery: 9.00 - 10.30 a.m. (no appointments)
Afternoon Surgery: 4.00 - 5.30 p.m. (appointment only)
For appointments and all enquiries ring 663222

HAWES SURGERY ROTA Wb - week beginning										
Wb	1jan		8jan		15jan		22jan		29jan	
Day	a.m.	p.m.	a.m.	p.m.	a.m.	p.m.	a.m.	p.m.	a.m.	p.m.
Mon	shut	shut	WJ	WJ	JA	JA	FA	FA	WF	F
Tues	JA	JA	FA	FA	WF	WF	W	W	A	A
Wed	W	W	J	J	F	F	F	F	W	W
Thur	A	A	F	F	W	W	F	F	A	A
Fri	WF	W	WJ	WJ	A	A	A	A	WF	WF
Sat	Emergency service only									

Doctors: A - Arblaster, F - France, J - Jones, W - West, C - Closed
Morning S'y: 8.45-10.15 Tues till 10.45 (no appointments)
Afternoon S'y: 5.00-6.00 Tues 1.00-4.00 (appointments only)
For appointments and all enquiries ring 667200

Hawes Bonfire and Fireworks

Go on, have a smile!

The organisers of the Bonfire and Fireworks would like to thank everyone who supported our Casino Night and helped to raise over £400. We would also like to thank the Wensleydale Round Table for running the evening, and the local businesses who donated prizes. Our thanks also go to everyone who has made a donation to the fund this year and to all the people who attended the bonfire and gave so generously, helping us to raise over £700.

On the negative side, could the person/persons responsible for putting the mattresses on the bonfire and ignoring our notice requesting that no such items should be left there, please remove them from the bottom of the station yard.
 Thank you.

Harry Balderston

“I was doing some decorating, so I got out my step-ladder. I don't get on with my real ladder.”

“My Dad used to say 'always fight fire with fire', which is probably why he got thrown out of the fire brigade.”

“I think animal testing is a terrible idea; they get all nervous and give the wrong answers.”

“You know that look women get when they want sex? No, me neither.”

“I was the kid next door's imaginary friend.”

“Right now I'm having amnesia and déjà vu at the same time. I think I've forgotten this before.”



Letters

To the Editor; Dear Sir,
Having just read the
(Upper) Wensleydale
Newsletter, I felt inspired to
write an account of a very enjoyable visit
my husband and I experienced in this area.

We attended the concert at the Friends' Meeting House in Bainbridge, all of £3 entrance, to hear excellent music, anecdotes and jokes by the "Dalesfolk". We had a warm and friendly welcome from David Jackson and his wife Jenny who is advertising some interesting arts and crafts courses (I wish I lived here!) and such was the atmosphere that it encouraged members of the audience to have friendly chats.

David Jackson was our guide 4 days later: "Walk and Talk" through beautiful countryside; and the life of local country folk mad a fascinating tour.

The service in church led by Rev. Ann Chapman who does not 'do' sermons again encouraged friendly participation. The warden and his wife told us of how they had visited the area... and stayed.

Sunday lunch was a delicious treat in front of open fires at the Crown in Askrigg; any provisions we needed were found at Sykes' Country Store, again welcomed by a friendly shopkeeper.

We were staying at H.P.B. and enjoyed a superb meal in the King's Arms. At Lodge Yard nothing is too much trouble. I can see why James Herriot settled here and we look forward to more Wensleydale cheese-my favourite— on our next visit. Many thanks to all those we met and made our visit special.

Sincerely,
Ken and June Brazier
Princes Risborough, Bucks

Re Michael Weatherald and his marbles!

Rocco Rea's ice cream.

Yes, Michael, the best ever! Mine was bought on summer Sundays at Yore Mills.

Rocco and his bike and later his van stood just over the bridge by the gate to the Upper Falls for most of those afternoons, or as long as there were plenty of people to sell to. There were a lot of visitors to the Falls even in those days. My aunt, who lived in one of the cottages near the bridge, made afternoon teas and sold postcards.

Marian Kirby (nee Scott),
Aysgarth

I think everyone in Hawes would like to thank the committee of the fireworks for the work in organising such a successful display.

Carolyn Cloughton

Thank you for your letter and cheque dated 7/11/2006. I can't possibly tell you how grateful I am for the contribution from you and your team at the Upper Wensleydale Newsletter. Throughout my course I need many books to provide a fuller understanding of the module, the only problem being each book is rarely less than £40. Your contribution of £100 will certainly go a long way, and I will now be able to afford books which previously I could not. I think the idea of supporting local students, especially with the introduction of top up fees is certainly an excellent one, and I and many of my fellow students thoroughly support you. Thank you again for your support.

Yours Faithfully,

Ben Spence, Aysgarth

Before I lose my Marbles
*I found the one I lost in an old
 lemonade bottle (ask your Great
 Grandad)*

Do not read this discourse at home, pack a coffee and motor down the Dale, through Askrigg, past Woodhall and park in the second National Park Car Park.

Enjoy your coffee alongside the babbling beck with the vista of Hawbank - 30 acres of hazel and hawthorn growing out of a carpet of bracken. High above - a stone circle - the Druids Calendar. Down below an old lead mine with its spoil heaps grassed over and speckled with Dales flora; a lichened lime kiln, sheep and wild life all-around.

To the south 'The Rabbit Warren' - some 80 acres which 75 years ago were teeming with Silver Grey Rabbits. But 75 years ago the site where you are parked was teeming with holiday makers— in the area between the beck and the road were sited some thirty wood enchanting chalets - The Dales Holiday Centre. You are parked where once stood a Dance Hall, a cafe and shop.



An under-capitalised Charles Ratcliffe bought a complete redundant holiday camp

at Whitley Bay in Northumberland, the whole complex was transported to the Hawbank site (no planning permission required pre-war, the only restraint on planning was how much your bank would lend. A replica of Blackpool Tower could have been erected at Aysgarth Falls with no problem!)

Using local labour (they called it Bungalow City!) Charles erected the



chalets. Each unit had a covered patio, a nameplate - all Dales: Yoredale, Dove Dale, Farndale etc. The colour scheme was bright green and snow white.

South of the road were 2 or 3 caravans - huge boarded rectangular boxes on four wheels - wooden spokes with iron hoops. How did they get them there (Does any one know?) Green and white to match.

One resident of the caravans was Joe Ryder from Redmire (please tell me about Joe.)

The east end of the site (where you are parked) was the social area, a shop stocked with every need of the holiday maker. Dances in the Hall on Saturday night - those were the

days!

Charles Ratcliffe was a contemporary of

Billy Butlin. Billy Butlin got it right Charles Ratcliffe failed — why? While Charles was busy at Hawbank Billy was building at Filey. Filey had electricity and gas, Hawbank had oil lamps/stoves and candles Filey had sewerage disposal, poor Hawbank had chemical loos.

Butlin's crowning glory was in persuading the L.N.E.Railway to build a station along side his camp so you could buy a ticket to "Butlins Filey"

In the 1930s there were very few cars around (the doctor, the vicar, and maybe the local garage) and the Ratcliffe clients arrived at Aysgarth Station; no taxi rank! I remember seeing a family — mother with the pushchair, two tots walking and father with two suit-cases (no wheels) and a box of food. It is a long long trek from Aysgarth Station to Hawbank!

Poor Charles struggling with his business venture (and Billy Butlin on the way to being a millionaire), and World War 2 came in 1939. Filey was taken over by the navy as a training ship. Holidays ceased at Hawbank; the chalets were taken over by squatters and homeless groups.

Charles had moved from his home in Woodhall to a Chalet. In 1944 The North Riding County Council bought the site and its appendages. All was cleared away apart from Charles' Chalet in which he lived for a few months. He died a broken man but he had had the courage to try and have a go - legislation would not now permit such entrepreneurs.

Are we the poorer? After Charles' death the chalet was burnt.

From conception to demolition the Dales Holiday Centre only existed just over 10 years and all has now gone including the Silver Grey Rabbits.

The site is now two car parks and the area is cared for by the National Park -overnight

camping prohibited!

Michael Weatherald

Community Office news and courses

We now have beautiful new Lap Top Computers to use in our Skill Share Sessions or to LOAN OUT to the public. They are free of charge unless they are used for business purposes.

Our latest Skill Share Sessions are:

Excel Spreadsheets:

Wed 6th Dec. 1.30 - 3.30 pm

Digital Cameras

Wed 13th Dec. 1.30 - 3.30 pm

and for January:

Researching Family History

Tues 9th 7.00 - 9.00 pm

Get the Most out of Reading a Novel

Wed 17th 1.30 - 3.30 pm

Get by in Spanish (week 1 of 3)

Wed 24th 1.30 - 3.30 pm

Desk Top Publishing - making a Poster

Wed 24th 7.00 - 9.00 pm

Get by in Spanish (week 2 of 3)

Wed 31st 1.30 - 3.30 pm

In February there will be more Spanish, French and Italian, more Desk Top Publishing, a Book Reading and appreciation Group. Each session costs £5. Don't forget - you can take a Lap Top home with you to practise your new skills at home.

We are still keen to know what YOU want and if you have any skills to offer.

Police report

I want to raise an important point in relation to rowdy and anti-social behaviour. Firstly let me say it will not be tolerated; you should report it and we will act. There was an incident in one of the Hawes public houses early November where a fight broke out between three locals. Injuries were sustained and the police were called. No complaints were forthcoming – so you may think that that would be the end of the matter. WRONG - statements were obtained from witnesses and the persons involved all ended up receiving a fine. If you think that you can have a scrap and if the police are called and none of you makes a complaint nothing will be done, you are wrong. It is not right that lawfully abiding members of the public should be frightened to death by those often with too much drink inside them. It will not be tolerated and we will act positively. The licensees have a difficult enough job as it is and we will do all we can to support them.

Mischief Night, and sadly I have to report that the toilets in Station Yard car park were damaged by local youths – I know it was local youths as we were out patrolling the area and it was fine when we first went out but was not by the end of the night. Who do I lay the blame with? – well the offender first of all and secondly the parents. There is a small minority of youths in the town who insist on causing trouble and the parents know who they are and as such should keep proper control of them. I am not a babysitter, but that's what it felt like on Mischief Night - I for one am getting sick and tired of their mindless acts, it's not funny, it's not clever, it is time responsibility was taken by those who are responsible, otherwise we will do all we can to bring these offenders to justice.

There have been some other crimes this month; please be aware that vans are

again being broken into in the area and tools being stolen and we have numerous scrap men about. They are about day and night so anything suspicious report it. Be careful too with your quad bikes, and secure them as best you can. If you need any help or information please contact me or any member of staff at the community office and we will help you all we can.

Dave Cousins PC141

Hold on to Heritage

A Comenius Project

West Burton School, with 5 partner schools from across Europe, has been accepted for a project called 'Hold on to Heritage'. This project is known as a Comenius Project and the British Council funds the UK schools. The other schools are from Norway, Germany, Slovakia the Czech Republic and Pudsey, UK.

The main aim of the project is to discover, appreciate and celebrate cultural similarities and differences and encourage children to become good citizens of Europe.

I first met up with teachers from these schools at a contact meeting in York in October 2005. Thirty-five teachers from European schools attended and by the end of the weekend we had organised ourselves into like-minded groups. Our group then wrote a joint application that involved the children in our schools learning about school life in each of the other schools, and also work for us to complete through our curriculum over three years.

During this October half term I visited Dusseldorf, Germany, for the first project meeting. Nine teachers from the partner schools attended and I travelled with two teachers from St Joseph's School in Pudsey.

The first evening teachers from the German school, GGS Huelstrasse in Tonisvorst (a town west of Dusseldorf) entertained us at the home of the German teacher we had met in York, who lives in Dusseldorf. Day Two was spent writing the application for year two and planning work for the children for the rest of year one. This involves sending cards, making Christmas decorations to hang on a tree and an art project studying the work of an artist chosen by each school.

The evening saw us walking along the

banks of the Rhine and exploring the old town, before sampling the food in a German restaurant.

On Day Three we visited the German school. Fortunately the project is run in English and many of the German teachers spoke some English. The school is for children in years 2 to 5. There are around 90 children in each year group. The most asked question was about school uniform. The UK schools are the only ones to wear uniform. They were also amazed to find West Burton has only 45 children in the whole school.

We were generously entertained to a bring and share lunch by the teachers who would normally go home after finishing school at 1pm. After this we went to see the after-school hours activities. Over a 100 children stay for the afternoon and choose from a variety of activities some of which take place in a magnificent Sports Hall, other activities take place in the rooms used by the kindergarten in the morning.

We enjoyed a farewell meal in the evening (in a Spanish restaurant, we like to be truly European!). We continued to celebrate the birthday of the teacher from the Czech Republic who had 'Happy Birthday to You' sung in many different languages during the course of the day.

We were sad to say goodbye. As a group of teachers aged from 26 to 52 we are very different and come from many different backgrounds but we have become good friends over the last year. We keep in touch through joint emails. We look forward to meeting again in Norway in the May half-term.

Sally Stone

NB; more information can be found on our school website:

www.westburton.n-yorks.sch.uk

**Licensing Act 2003
Notice of an application for a
premises licence**

At the Dales Countryside Museum

Application by the Yorkshire Dales National Park Authority to host community events at the Museum including matinee and evening performance (plays, films, live or recorded music and dance).

Representations regarding this application, which may be inspected at the under mentioned address, must be made in writing by **December 28th 2006**, and sent to:

***Environment Unit
Licensing Section
Richmondshire District Council
Friars Wynd
Richmond
North Yorkshire
DL10 4RT***

It is an offence knowingly or recklessly to make a false statement in connection with an application and the maximum fine for which a person is liable on summary conviction of the offence is £5,000

MARKET PLACE AND JOB ADVERTS

**W.R.Outhwaite and Son,
Ropemakers
HAWES
JOB VACANCY**

Full-time post (due to retirement) to include general office duties and to manage the purchase and sales ledger routines in a small, busy, friendly team.

Experience of computerised accounting desirable, plus accuracy with figures and office procedures and a pleasant telephone manner. Enquiries/applications to **Mrs. Sylvia Morton, The Ropeworks, Hawes, North Yorkshire DL8 3HG**
Tel: It 667487.

**SHARPLES
Bill and Olive**

Congratulations and very best wishes on your Diamond Wedding Anniversary

December 7th

Love from Sylvia, Brian, Karen,
Andrew

To Bill and Olive Sharples
with love and best wishes;
congratulations on your
60th wedding anniversary
December 7th
Love from
Brenda, John, Kevin, Brigitte

LOW MILL Outdoor Centre

**PART TIME
HOUSEKEEPING ASSISTANT
REQUIRED**

11 hours per week plus holiday cover.
Weekend work on a rota basis.

Duties include:
kitchen assistant
Cleaning
£5.69 per hour

To start Monday January 15th
Closing date: Friday December 15th
Contact Carol at Low Mill, Askrigg,
DL8 3HZ
Tel: 650432; email:info@lowmill.com

**January 2nd 2007
Happy birthday
NATASHA
Love Mum XX**



**PORTACABIN
TO LET
Contact Hawes Auction
Mart
667207**

Askrigg Playgroup

Askrigg Playgroup Committee would like to say a very big thank you to all of the mums and grannies who baked their socks off for our home baking stall at the Askrigg School Christmas Fayre on Wednesday 15 November. We were overwhelmed with the number of delicious cakes, buns, biscuits and pies which we had to sell. We even had to store some under and behind the stall! We made a grand total of £87.50 which was way beyond our expectations. This will boost our funds considerably and benefit all the Playgroup children.

On a personal note I'd like to thank our neighbour Bernard Foster, who supplied us with wonderful homemade jellies, relish and mince pies. Also to Nicola, Tracey and Kirsten who helped out on the night and of course all of Upper Wensleydale who bought (and hopefully enjoyed) our baking.

MERRY CHRISTMAS AND A HAPPY
NEW YEAR FROM ALL OF US HERE
AT PLAYGROUP. **Emma Arblaster**

Mosaics Music day

On Saturday February 24th from 9.30am to 7.30pm at the Askrigg School and at Yorebridge there will be a chamber music-making day for adults— either individuals or pre-formed groups; all instruments and all standards with professional coaching. Full details are available from **Joan Foster 663368**

Altar alteration

Please note that in the new year St Andrew's Church, Aysgarth, will be undergoing alterations to form a raised nave altar. During this period services will have to be relocated to nearby venues. Please check local notice boards for details.

Index to Advertisers etc.	Page		
Aardvark pictures and framing	13	Old Smithy Antiques	28
Advertising rates and contacts	40	Paul's Pizzas	7
Bainbridge Vets	17	Peacock, coal merchant	22
Bainside Arts	8	Peacock, Hazel; alternate months	8
Balloons for Parties	22	Pennine print services	23
Bayford oil	27	Peter the Plumber; alternate months	26
Bayne, Linda; medical herbalist	11	Porter, outside caterer	24
Bay Tree	37	Post Office, Hawes	23
Bushby; joiner etc.	8	Punchard; plumbing;	28
Business Advisor	12		
		R and B Construction	28
Carrs Billington	20	Raw, Steve; decorator	9
Chair workshop	15	Redmire Taxi	11
Chainsaw Sculptures	33	Reeth Garage	11
Cleaning Services	25	Re-vive	30
Cockett's butchers	3	Rock and Gem Shop	40
Cockett's restaurant	27		
Competition	4	Scully, Neil; carpet fitter	11
Coppice coffee shop	16	Sedbergh Golf Club	8
Craske; electrical	5	Simonstone Hall	22
		Sportsman's Inn	6
Dales Carpet Cleaning	25	Sticky Ginger	13
Dales Electrical Ltd.	20	Stone House Hotel	22
DDR, Domestic appliance repairs	19	Stonescapes	34
Deadline dates	3	Strings without Tears	4
Doctors' rotas	29	Sumner, Geraldine; jeweller	17
Dovetail	18	Sweepin' the Dales	17
Drop-off points and contacts	3	Sycamores Restaurant	7
Elite Cinema	39		
Ellis, private hire	20	Thompson, UPVC windows	35
		Turnbeck Boarding Kennels	10
Farfield Mill	17	Virtually New	26
Focus on Felt	24	Webb, ironing service	40
George and Dragon Inn	5	Wensleydale racing	13
Ginger Tree; holistic health	18	Wensleydale Storage Solutions, WSS	35
Global Travel	32	Wensleydale Tree Services; D. Allen	28
Hartle; butcher	7	What's Ons listing: in middle pages	
Hawes Land, Property Services	11	White Hart Inn	37
Hearing Aids	7	White Rose Hotel	37
Herriot's restaurant and hotel	36	Wilmore; Green designs	9
Iveson, J.R. T.V. and Audio etc.	35	Window cleaning etc.	39
Jackson, Daphne; osteopath	33	Yore Mill Craft Shop	23
JWA, chartered architects	33	Yorkshire Dales Society	14
Kearton; dressmaking etc.	15	Yorkshire Foot Clinic	38
Kingfisher; tree surgery	34		
Kitty's Tea Room	19		
Kudu Bikes Ltd	3		
Leyburn Natural Health	16		
Littlefairs	15		
Lord, Stephen; decorator	11		
M.F.W. Aga and Boiler service	22		
Mallerstang Flag	26		
Mason Bros.	26		
Mulberry Bush	24		

News from Dalesplay

As we are experiencing increasing numbers please could you book your child in advance to avoid disappointment.

On **Thursday 7th, 14th and 21st December** we are hoping to stay open until **9pm**. This is to help all parents/carers with their Christmas shopping. If your child is not registered with us please contact us on: **667789** and we will help. **Hours will need to be pre-booked in order for the above to take place.**

Teddy Bears Picnic

We had a lovely morning on Friday 17th November when we had a teddy bears picnic. All in all we raised £36.02 for Children In Need.

We are now taking bookings for the week leading up to Christmas. If you need to register your child a member of staff will guide through the process.

Dalesplay are hosting a Cheese and Wine night. This will give parents/carers and the general public an opportunity to meet the Staff and Directors and have a tour around our fantastic Nursery. This will take place on Monday 11th December from 7.30 – 8.30pm.. ALL WELCOME

From 6pm on Friday 22nd December we will close for Christmas and reopen on Wednesday 3rd January 2007 at 8am.

We Wish You A Merry Christmas And A Happy New Year!

A LETTER TOO MANY; for your entertainment

He didn't like turkey for Christmas so he always went for the frump



Advertising

Boxed adverts: £5, £10, £15

There is a one-third reduction for three issues or more, so for twelve issues the totals are

£40, £80 or £120

Greetings etc. £2.00

What's ons (non-commercial) are free

Whilst we try to make sure that all information is correct we cannot be held legally responsible for omissions in articles, listings and advertisements or for any inconvenience caused thereby. Views expressed are not necessarily the views of the committee. Articles by committee members just use initials for the by-line. Please ask before reproducing any part of the newsletter.

Published by

The Upper Wensleydale Newsletter
Old Station House,
Hawes, DL8 3NL

Tel: 01969 667785 Fax: 01969 663559
e-mail:alan.watkinson@virgin.net

Extracts of the Newsletter on the Web:
www.wensleydale.org/newsletter

Printed by Peter C. Wood, Peter H. Jackson and ASW and collated, folded, stapled by newsletter volunteers at the Wensleydale Centre, Yorebridge, Askrigg

Committee: Alan S.Watkinson,
Rima Berry, Belinda Bond (Bursary student),
Sue Duffield, Sue Harpley,
Katherine Head ,(Kids' page),
Peter H. Jackson, Alastair Macintosh,
Pam Robinson, Janet W. Thomson,
Lorna Ward.